

1080p / 1080i

Real Time, Full Screen HD Video

RealView™ HD-210D HD Microscope Camera

Real Time High Definition
Single Chip CMOS Camera

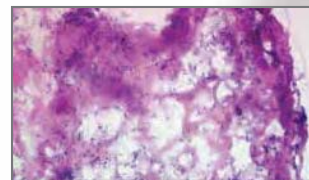
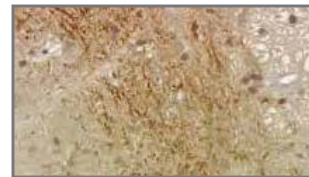


HD-210D

The RealView high definition color microscope camera is the premier solution to viewing highly detailed images in a real time live mode. The high frame rate provides smooth motion while the 2.1 megapixel sensor provides a sharp, true full screen HD image.

The RealView camera is especially effective in settings such as tumor review boards, clinical rounds, pathology labs, teaching environments and industrial inspection.

Combine with the Real View™ HD Magic Box for an unparalleled imaging capture and review system.



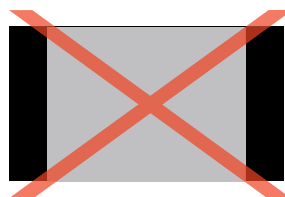
Sample Images from the RealView™ HD-210D



HD-210D Back Panel

Full Screen HD Image

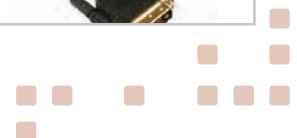
- The HD-210 outputs a true 16x9 ratio HD image for full screen display
- No vertical compression or horizontal stretching
- No black bars and no cropping of image
- Matches your monitor's HD specs for a true pixel to pixel image



Real Time Viewing

- The HD-210 outputs images at a high frame rate (60 FPS) for smooth real time live motion
- Selectable between 1080p/60, and 1080i/30
- Connects simply with DVI cable or HDMI converter cable
- No PC or software required

60 FPS
frame rate



REAL TIME, FULL SCREEN HD VIDEO

RealView™ HD-210D HD Microscope Camera

Real Time High Definition
Single Chip CMOS
Microscope Camera



Exceptional detail 2.1 million pixel HD sensor

1920 x 1080 resolution of real time image

Accurate color reproduction

Preprogrammed for best brightfield color imaging

Live HD image adjusts quickly to magnification or scene change

No image smear, lag or jitter

Eliminates eye fatigue from repetitive eyepiece viewing

Enables collaborative diagnostics in group setting

Allows entire class to view a live image on monitor or DLP projector

16x9 HD image fills the monitor screen

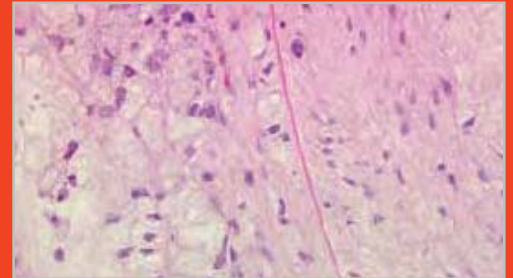
Easy to connect with standard DVI output

Standard "C" mount for simple connect

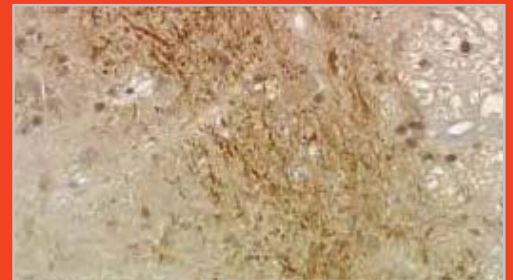
1/3" optical coupler recommended for microscope

Dage-MTI service and support from industry leader

Ideal solution for a review board, teaching setting, or other collaborative environments.



Sample Images from the RealView™ HD-210D



Sample Images from the RealView™ HD-210D

©2013 Dage-MTI, All Rights Reserved

Combine with the RealView™ Magic Box for an unparalleled imaging output system.

DAGE-MTI

フオトニックインストゥルメンツ株式会社 〒215-0025川崎市麻生区五力田2-2-1-102
Phone 044-981-0025 Fax 044-981-0026 E-mail info@pij.co.jp <http://www.pij.co.jp/>